

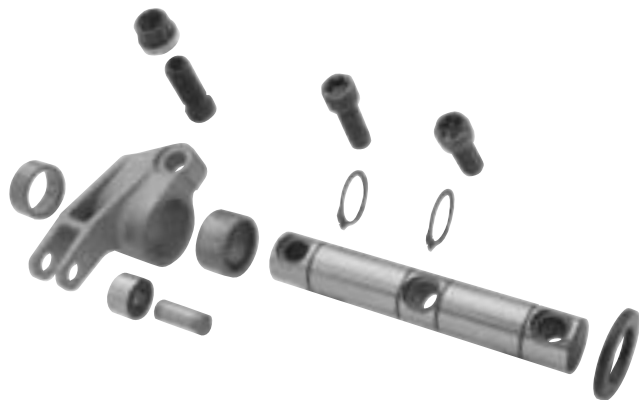
shaft-mounted rocker arms stainless steel



For those of you that feel most confident running a valve train based in steel, we offer you the Crower collection of shaft mounted stainless steel rocker arms. Each and every configuration has been religiously scrutinized to offer extreme rigidity and accuracy while optimizing moment of inertia phenomena/condition.

Crower engineers made ease of installation and maintenance a top priority so you'll never waste a moment when time is critical at the track. Our stainless steel shaft rocker systems are a perennial favorite of grand national racers and marine endurance competitors.

Sustained high temperature has little affect on the strength properties of stainless steel so components made from this material should have a longer life expectancy than similar components made from aluminum.



Offset Guide



stainless steel shaft mounted rocker systems

AFR

Part#	Description	Arm Lgth	Intake Offset	Exh Offset
74131	180/210	1.480	.250	.100
74132	215 RR	1.480	.450	.100
74132	220	1.480	.450	.100
74130	227	1.480	.450	.100

All Pro

Part#	Description	Arm Lgth	Intake Offset	Exh Offset
74134	23° 40/60	1.480	.450	.100
74135	17°	1.650	.450	.175

Brodix

Part#	Description	Arm Lgth	Intake Offset	Exh Offset
74116	Track I	1.480	.150	.100
74116	SBC Irwindale Spec	1.480	.150	.100
74112	-8 through -11	1.480	.250	.100
74126	10x 11x 40/60 & ASCS	1.480	.250	.100
74127**	10x 11x 40/60 & ASCS	1.480	.450	.100
74114	10x 11x 40/60 LA*	1.650	.250	.100
74129	Track 1x 40/60	1.480	.250	.100
74122	-12 LA*	1.650	.500	.100
74136	12X12	1.650	.550	.100
74124	12X12 RP LA*	1.650	.550	.100
74125	18° Clone LA*	1.650	.550	.250
74126	18x 40/60	1.480	.250	.100
74002	BBC -2 w/Std. Valves	1.650	.000	.000
74003	BBC 2X +.250 int valve	1.650	.000	.000
74004	BBC 2X +.250 int/+.100 exh	1.650	.000	.000
74005	BBC 2X +.350 int/+.100 exh	1.650	.000	.000
74006	BBC -4	1.650	.000	.000

Canfield

Part#	Description	Arm Lgth	Intake Offset	Exh Offset
74111	23° 400	1.480	.100	.100
74131	Small Runner	1.480	.250	.100
74132	Large Runner	1.480	.450	.100

Dart

Part#	Description	Arm Lgth	Intake Offset	Exh Offset
74112	SBC Pro 1	1.480	.250	.100
74111	Dart II Sportsman	1.480	.100	.100
74112**	Dart II Sportsman	1.480	.250	.100
74111	230 Iron Eagle	1.480	.100	.100
74112**	230 Iron Eagle	1.480	.250	.100
74127	23° RR 40/60	1.480	.450	.100
74117	18° Clone	1.650	.550	.250
74010	BBC Pro 1	1.650	.000	.000

Most shaft rocker assemblies are available with optional offsets. If you don't find the offset you require, please ask about availability.

* LA = Long Arm **Optional offset

Ratios over 1.8 may require a long arm rocker arm. Arm lengths over 1.650 are available in aluminum only.

Edelbrock

Part#	Description	Arm Lgth	Intake Offset	Exh Offset
74111	SBC Performer	1.480	.100	.100
74131	SBC Victor Jr.	1.480	.250	.100
74117	SBC Victor 18°	1.650	.550	.250
74127	SBC Victor 23° High Port	1.480	.450	.100
74003	BBC Victor	1.650		
74163	Pontiac BB 326-455	1.480	.100	.100
74165	Pontiac BB 326-455	1.480	specify	specify

GM Castings

Part#	Description	Arm Lgth	Intake Offset	Exh Offset
74218	V6 18° LA*	1.650	.550/.650	.250
74111	SBC Iron & Bowtie	1.480	.100	.100
74119	SBC Phase 6 Alum. Bowtie	1.480	.450	.100
74117	SBC 18° LA*	1.650	.550	.250
74122	Pontiac/SBC 15° LA*	1.650	.475	.100
74126	Pontiac/SBC 23° 867 40/60	1.480	.250	.100
74127**	Pontiac/SBC 23° 867 40/60	1.480	.450	.100
74163	Pontiac BBC 326/455	1.480	.100	.100

Pro Action

Part#	Description	Arm Lgth	Intake Offset	Exh Offset
74116	Iron Lightening	1.480	.150	.100
74123	23° Iron RR	1.480	.450	.100
74153	23° Iron RR LA*	1.650	.450	.100
74138	Pro Action 14°	1.650	.550	.250

TFS

Part#	Description	Arm Lgth	Intake Offset	Exh Offset
74154	-5 18° SBC	1.480	.550	.250
74111	23° SBC	1.480	.100	.100

World Products

Part#	Description	Arm Lgth	Intake Offset	Exh Offset
74111	SR Torquer	1.480	.100	.100
74112	Sportsman II	1.480	.250	.100

NEEDLE BEARING TIP OPTION

All Crower stud and shaft mount rocker arms are available with Crower's new needle bearing roller tip option. Results are greatly reduced friction for added horsepower and reduced valve guide and valve stem wear. The lighter tip delivers greater valve control for increased rpm and improves valve spring longevity by decreasing heat over traditional non needle designs. Specify #73715R option for stainless steel (stud or shaft) or #72915R option for aluminum (stud or shaft) when ordering rocker arms.

shaft-mounted rocker arms stainless

replacement components

17-4 steel

Stainless Steel Shaft Rocker Mounting Base Stands

Crower Shaftrocker Assembly Application Stand I.D.# Order This Stand Part No.

AFR

74131	180/210	010	74400X010
74132	215 RR	025	74000X025
74132	220	025	74400X025
74130	227	025	74400X025

All Pro

74134	23° 40/60	021	74400X021
74135	17°	013	74400X013

Brodix

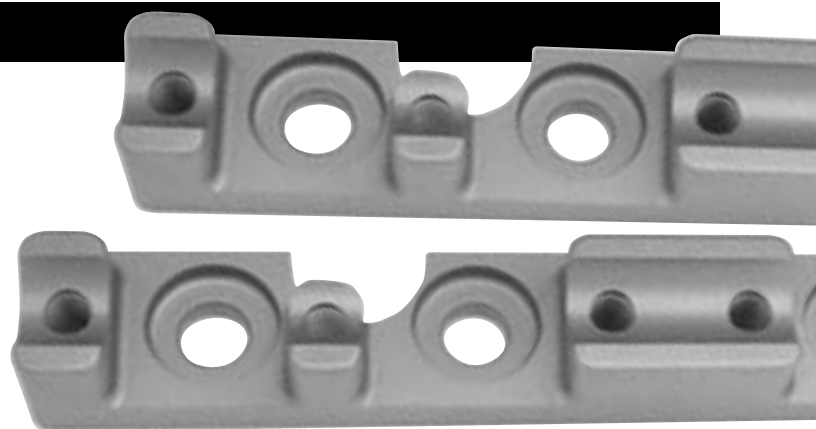
74116	Track I	010	74400X010
74116	Irwindale Spec	010	74400X010
74112	-8 through -11	010	74400X010
74126	10x 11x 40/60 ASCS	021	74400X021
74127	10x 11x 40/60 ASCS	021	74400X021
74114	10x 11x 40/60 LA	013	74400X013
74129	Track 1x 40/60	021	74400X021
74122	-12 & LA	023	74400X023
74136	12X12	023	74400X023
74124	12X12 RP LA	023	74400X023
74125	18° Clone LA	013	74400X013
74126	18x 40/60	021	74400X021
74002	BBC -2	048 Intake	74400X048
	standard valves	049 Exhaust	74400X049
74003	BBC 2x .250 long intake valve, standard exhaust valve	072 Intake	74400X072
		073 Exhaust	74400X073
74004	BBC 2x .250 long intake valve, .100 long exhaust valve	072 Intake	74400X072
		074 Exhaust	74400X074
74005	BBC 2x .350 long intake valve, .100 long exhaust valve	075 Intake	74400X075
		074 Exhaust	74400X074
74006	BBC -4	076 Intake	74400X076
	standard valves	077 Exhaust	74400X077

Canfield

74111	23° 400	010	74400X010
74131	Small Runner	010	74400X010
74132	Large Runner	025	74400X025

Dart

74111	Dart II Sportsman	010	74400X010
74112	Dart II Sportsman	010	74400X010
74111	230 Iron Eagle	010	74400X010
74112	230 Iron Eagle	010	74400X010
74127	23° RR 40/60	021	74400X021
74117	18° Clone	011	74400X011
74010	BBC Pro 1	070 Intake	74400X070
		071 Exhaust	74400X071



Crower Shaftrocker Assembly Application Stand I.D.# Order This Stand Part No.

Edelbrock

74131	SBC Victor Jr.	010	74400X010
74111	SBC Performer	010	74400X010
74117	SBC Victor 18°	011	74400X011
74127	SBC Victor 23° High Port	021	74400X021
74003	BBC Victor .250 intake valve, .100 exhaust valve	072 Intake	74400X072
		073 Exhaust	74400X073
74163	Pontiac BBC 326-455	060	74400X060
74165	Pontiac BBC 326-455	060	74400X060

GM Castings

74218	V6 18° LA	006	74400X006
74111	SBC Cast Iron & Bowtie	010	74400X010
74119	SBC Phase 6 Alum. Bowtie	010	74400X010
74117	SBC 18° LA	011	74400X011
74122	Pontiac/SBC 15° LA	023	74400X023
74126	Pontiac/SBC 23° 867 40/60	021	74400X021
74127	Pontiac/SBC 23° 867 40/60	021	74400X021
74163	Pontiac/BBC 326/455	060	74400X060

Pro Action

74116	Iron Lightening	010	74400X010
74123	23° Iron RR	020	74400X020
74153	23° Iron RR LA	011	74400X011
74138	Pro Action 14°	016	74400X016

TFS

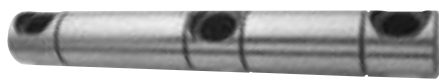
74154	-5 18° SBC	010	74400X010
74111	23° SBC	010	74400X010

World Products

74111	SR Torquer	010	74400X010
74112	Sportsman II	010	74400X010

NOTE: I.D. numbers are stamped on all mounting base stands. When you are ordering your replacement base stand please reference this I.D. number handy to ensure you get the correct part.

stainless steel 17-4 stainless steel stainless steel stainless steel



SHAFT REPLACEMENTS

Part No.	Description
74501X001	Chevrolet SB Cylinders 1, 5, 8, 4
74501X002	Chevrolet SB Cylinders 3, 7, 6, 2
74501X003	Chevrolet SB SB2
74501X004	Pontiac
74501X020	Chevrolet BB



TORX HEAD SHAFT BOLTS

Shaft bolt fastens rocker shaft to the mounting base stand.
(5/16-24 X 1 Torx Plus)
#74524 1 Only



SNAP RINGS

Snap ring for Stainless shaft rocker assemblies. 11/16 shaft.
1 Only.
#74529



STAND-TO-CYLINDER HEAD SHIMS

Mounting base stand shimming is often required to achieve optimum rocker arm-to-valve geometry. Available in three thicknesses. Specify head when ordering.

Part No.	Description
74527X025	.025 Thick 1 only
74527X050	.050 Thick 1 only
74527X100	.100 Thick 1 only
74530X045	Inv. Shft. Rk. 1 only

STAND BOLTS

Fasteners for securing mounting base stands to cylinder head. Specify length: 3/4", 1", 1 1/4".

Part No.	Dia.	Length
74525X001	7/16"	3/4"
74525X002	7/16"	1"
74525X004	7/16"	1 1/4"
74525X005	3/8"	3/4"
74525X006	3/8"	1"



STAINLESS STEEL SHAFT ROCKER REPLACEMENT BODIES

Our replacement bodies are built to the same exacting tolerances as our shaft assemblies for true bolt-on accuracy and repeatability. They include the adjusting components, tip assembly and bearings. They are fully assembled, ready for mounting. Specify engine, head, which cylinder, intake or exhaust, ratio and offset when ordering.

#74510 Shaft Rocker Body 1 only



ASSEMBLED STAINLESS STEEL SHAFT ROCKER REPLACEMENTS

Our mounted replacement bodies are fully assembled, ready for mounting. They include the adjusting components, tip assembly, bearings, shaft and shaft spacers. Specify which cylinder, ratio and offset when ordering.

#74503 Shaft Rocker - 1 Assembled Pair for 1 pc. stand
#74505 Shaft Rocker - 1 Assembled Rocker for individual stand



SHAFT SPACERS

Hardened steel spacers for proper valve stem-to-rocker tip alignment.

#74526X000 11/16 x 1 1/8 x Custom
#74526X010 11/16 x 1 1/8 x .010 thick
#74526X045 11/16 x 1 1/8 x .045 thick
#74526X055 11/16 x 1 1/8 x .055 thick
#74526X065 11/16 x 1 1/8 x .065 thick
#74526X075 11/16 x 1 1/8 x .075 thick
#74526X085 11/16 x 1 1/8 x .085 thick
#74526X100 11/16 x 1 1/8 x .100 thick
#74526X125 11/16 x 1 1/8 x .125 thick
#74526X145 11/16 x 1 1/8 x .145 thick
#74526X190 11/16 x 1 1/8 x .190 thick
#74526X250 11/16 x 1 1/8 x .250 thick



LASH ADJUSTMENT COMPONENTS

#74522 3/8 lash adjuster screw, 1 only

#74523 Lash adjuster jam nut, 1 only
3/8-24 12pt



NEEDLE BEARINGS

#74528X001 11/16" dia. x 3/8"
#74528X002 11/16" dia. x 1/2"
#74528X003 11/16" dia. x 3/4"



AXLE PIN & WHEEL ASSEMBLIES

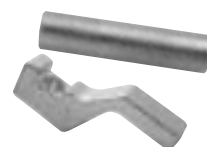
This replacement kit contains one each of the following:
Axle pin, tip wheel
#74520 1set
Individual parts:
#74520P Axle pin, 1 only
#74520T Tip wheel, 1 only

accessories



TORX DRIVE SOCKET

Fits our shaft bolts.
#74306



SHAFT HEIGHT GAUGE KIT

Clever tool makes quick work of setting optimum stand/shaft height.

#74300X001 fits 5/16" valve
#74300X002 fits 11/32" valve
#74300X003 fits 3/8" valve)

ADJUSTABLE PUSHROD GAUGE

Allows you to quickly determine the precise pushrod length requirement. A must have tool for achieving optimum valve train geometry.

Part No. Description
70480 5.500" to 6.500"
70481 6.500" to 7.500"
70482 7.500" to 8.500"
70483 8.500" to 9.500"
70485 includes one of each length

E-Z WRENCH

A must have for quick rocker adjustment. 7/16 12 point wrench with 1/8 hex.

#74305



MOUNTING KIT

Kit for individual mounting base stand shaft rocker systems.
#74308 Includes:

- 1-jig
- 1-3/16" drill
- 1-Drill stop
- 1-Hold down bolt
- 32 #74530 shims
- 32 #74531 dowel pins

TESTING/CHECKING SPRING

Set of 2
87601-SPR



SPRING COMPRESSOR ADAPTER SHAFT

#74303

shaft-mounted rocker arms

aluminum

Each of our Aluminum Shaft Rocker configurations is impeccably designed and produced to maximize valve train rigidity and accuracy while offering a minimal amount of reciprocating mass.

We have utilized the longest arm lengths practical for each application. The results are minimal rocker tip travel and associated frictional losses as well as the capability to accommodate large diameter valve springs with ease.

Speaking of ease, these set-ups allow for the quickest at-the-track valve train modifications around. Any task that requires rocker removal can be performed without concern for absolute accuracy and repeatability upon reassembly.



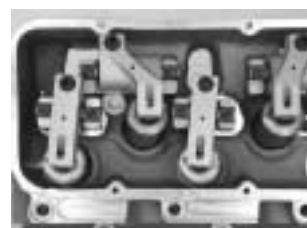
Typical Brodix -11



Typical SB2



Typical AFR 227



Typical Olds/BB Buick

Offset Guide

straight



.100" Offset



.150"-.175" Offset



.250" Offset



.350"-.650" Offset



aluminum shaft mounted rocker systems

AFR

Part#	Description	Arm Lgth	Intake Offset	Exh Offset
75131	180/210	1.520	.250	.100
75132	215 RR	1.520	.450	.100
75132	220	1.520	.450	.100
75130	227	1.520	.450	.100

All Pro

Part#	Description	Arm Lgth	Intake Offset	Exh Offset
75134	23° 40/60	1.520	.450	.100
75135	17°	1.620	.450	.175

Brodix

Part#	Description	Arm Lgth	Intake Offset	Exh Offset
75116	Track I	1.480	.150	.100
75116	Irwindale Spec	1.480	.150	.100
75126	Track 1x 40/60	1.520	.250	.100
75112	-8 through -11	1.480	.250	.100
75126	10x 11x 40/60 & ASCS	1.520	.250	.100
75127**	10x 11x 40/60 & ASCS	1.520	.450	.100
75122	-12 & LA*	1.650	.500	.100
75136	12X12	1.650	.550	.100
75124	12X12RP LA*	1.650	.550	.100
75137	12X12RP XLA***	1.750	.550	.100
75129	18° Clone	1.520	.550	.250
75125	18° Clone LA*	1.650	.550	.250
75126	18x 40/60	1.520	.250	.100
75287	351 Ford Irwindale Spec	1.480	.000	.000
75000	BBC Special Order	1.650	.000	.000
75002	BBC -2 w/Std. Valves	1.650	.000	.000
75003	BBC 2X +.250 int valve	1.650	.000	.000
75004	BBC 2X +.250 int/+.100 exh	1.650	.000	.000
75005	BBC 2X +.350 int/+.100 exh	1.650	.000	.000
75006	BBC -4	1.650	.000	.000
75009	Big Duke	1.650	1.300/.600	

Canfield

Part#	Description	Arm Lgth	Intake Offset	Exh Offset
75111	23° 400	1.480	.100	.100
75131	Small Runner	1.520	.250	.100
75132	Large Runner	1.520	.450	.100

Dart

Part#	Description	Arm Lgth	Intake Offset	Exh Offset
75112**	SBC Pro 1	1.480	.250	.100
75111	Dart II Sportsman	1.480	.100	.100
75112**	Dart II Sportsman	1.480	.250	.100
75111	230 Iron Eagle	1.480	.100	.100
75112**	230 Iron Eagle	1.480	.250	.100
75127	23° RR 40/60	1.520	.450	.100
75128	18° Clone	1.520	.550	.250
75117	18° Clone LA*	1.650	.550	.250
75007	Big Chief/14° Olds	1.650	1.300/.600	.000
75010	BBC Pro 1	1.650	.000	.000

Most shaft rocker assemblies are available with optional offsets. If you don't find the offset you require, please ask about availability.

* LA = Long Arm **Optional offset ***XLA = Extra Long Arm

Edelbrock

Part#	Description	Arm Lgth	Intake Offset	Exh Offset
75131	SBC Victor Jr.	1.520	.250	.100
75111	SBC Performer	1.480	.100	.100
75128	SBC Victor 18°	1.520	.550	.250
75117	SBC Victor 18° LA*	1.650	.550	.250
75127	SBC Victor 23° High Port	1.520	.450	.100
75283	302/351 Ford Victor Jr.	1.480	.000	.000
75282	Ford V-351 Edelbrock	1.520	.500	.000
75163	Pontiac BB 326-455	1.520	.100	.100
75165**	Pontiac BB 326-455	1.520	specify	specify

Ford & SVO

Part#	Description	Arm Lgth	Intake Offset	Exh Offset
75283	302/351 Stock Production	1.480	.000	.000
75280	Ford 351-N (SVO)	1.480	.150	.150
75286	Yates 1pc. stand	1.650		
75085	Ford 351C, 429/460 CJ Individual stand	1.650	.000	.000
75087	C460 1pc. stand	1.750	1.00	

GM Castings

Part#	Description	Arm Lgth	Intake Offset	Exh Offset
75218	V6 18° LA	1.650	.550/.650	.250
75111	SBC Iron & Bowtie	1.480	.100	.100
75116	SBC Iron & Bowtie	1.480	.150	.100
75119	SBC Phase 6 Alum. Bowtie	1.520	.450	.100
75128	SBC 18°	1.520	.550	.250
75117	SBC 18° LA*	1.650	.550	.250
75115	SB 2-2 18° 1pc. stand	1.650	.150	.150
75120	SB 2-2 Head & Block	specify	specify	specify
75122	Pontiac/SBC 15° LA	1.650	.500	.100
75126	Pontiac/SBC 23° 867 40/60	1.520	.250	.100
75127**	Pontiac/SBC 23° 867 40/60	1.520	.450	.100
75163	Pontiac BB 326/455	1.520	.100	.100

Pro Action

Part#	Description	Arm Lgth	Intake Offset	Exh Offset
75116	Iron Lightening & 23°	1.480	.150	.100
75123	23° Iron RR	1.520	.450	.100
75153	23° Iron RR LA*	1.650	.450	.100
75138	14°	1.650	.550	.250

TFS

Part#	Description	Arm Lgth	Intake Offset	Exh Offset
75154	-5 18° SBC	1.520	.550	.250
75112	23° SBC	1.480	.250	.100

World Products

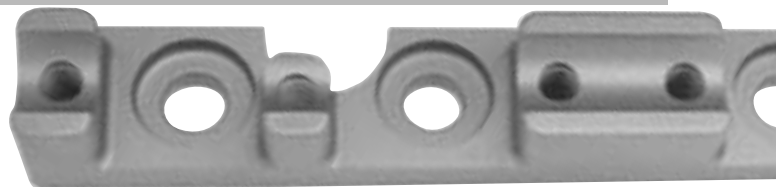
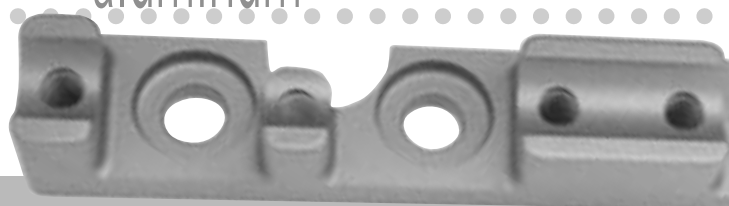
Part#	Description	Arm Lgth	Intake Offset	Exh Offset
75111	SR Torquer	1.480	.100	.100
75112	Sportsman II	1.480	.250	.100

NOTE: I.D. numbers are stamped on all mounting base stands. When you are ordering your replacement base stand please reference this I.D. number handy to ensure you get the correct part.

shaft-mounted rocker arms

aluminum
aluminum
aluminum

replacement components



Aluminum Shaft Rocker Mounting Base Stands

Crower Shaftrocker Assembly Application Stand I.D.# Order This Stand Part No.

AFR

75131	180/210	110	75400X110
75132	215 RR	125	75400X125
75132	220	125	75400X125
75130	227	125	75400X125

All Pro

75134	23° 40/60	121	75400X121
75135	17°	113	75400X113

Brodix

75116	Track I	114	75400X114
75116	Irwindale Spec	114	75400X114
75126	Track 40/60	121	75400X121
75112	-8 through -11	114	75400X114
75126	10x 11x 40/60 ASCS	121	75400X121
75127	10x 11x 40/60 ASCS	121	75400X121
75122	-12 LA	123	75400X123
75136	12X12	123	75400X123
75124	12X12RP LA	123	75400X123
75137	12X12RP XLA	119	75400X119
75129	18° Clone	121	75400X121
75125	18° Clone LA	113	75400X113
75126	18x	121	75400X121
75287	351 Ford Irwindale Spec	151	75400X151
75002	BBC -2	148 Intake	75400X148
	standard valves	149 Exhaust	75400X149
75003	BBC 2x .250 long intake valve,	172 Intake	75400X172
	standard exhaust valve	173 Exhaust	75400X173
75004	BBC 2x .250 long intake valve,	172 Intake	75400X172
	.100 long exhaust valve	174 Exhaust	75400X174
75005	BBC 2x .350 long intake valve,	175 Intake	75400X175
	.100 long exhaust valve	174 Exhaust	75400X174
75006	BBC -4	176 Intake	75400X176
	standard valves	177 Exhaust	75400X177
75009	Big Duke	145 Exhaust	75400X145
		147 1.330 Int.os	75400X147
		146 .600 Int.os	75400X146

Canfield

75111	23° 400	114	75400X114
75131	Small Runner	110	75400X110
75132	Large Runner	125	75400X125

Dart

75112	SBC Pro I	114	75400X114
75111	Dart II Sportsman	114	75400X114
75112	Dart II Sportsman	114	75400X114
75111	230 Iron Eagle	114	75400X114
75112	230 Iron Eagle	114	75400X114
75127	23° RR 60/40	121	75400X121
75128	18° Clone	120	75400X120
75117	18° Clone LA	111	75400X111
75007	Big Chief/14° Olds	145 Exhaust	75400X145
		147 1.330 Int.os	75400X147
		144 .600 Int.os	75400X144
75010	BBC Pro 1	170 Intake	75400X170
		171 Exhaust	75400X171

Crower Shaftrocker Assembly Application

Stand I.D.#

Order This Stand Part No.

Edelbrock

75131	SBC Victor Jr.	110	75400X110
75111	Performer	114	75400X114
75128	SBC Victor 18°	120	75400X120
75118	SBC Victor 18° LA	111	75400X111
75127	SBC Victor 23° High Port	121	75400X121
75283	302/351 Ford Victor Jr.	156	75400X156
75282	Ford V-351 Edelbrock	152	75400X152
75163	Pontiac BB 326-455	160	75400X160
75165	Pontiac BB 326-455	160	75400X160

Ford SVO

75283	302/351 Stock Production	156	75400X156
75280	Ford 351-N (SVO)	151	75400X151
75286	Nascar Yates 1 pc. Stand	127	75400X127
75085	Ford 351C, 429/460 CJ	153 Intake	75400X153
	Individual Stand	154 Exhaust	75400X154
75087	Ford C460 1pc. stand	155	75000X155

GM Castings

75218	V6 18° LA	106	75400X106
75111	SBC Iron & Bowtie	114	75400X114
75116	SBC Iron & Bowtie	114	75400X114
75119	SBC Phase 6 Alum. Bowtie	110	75400X110
75128	SBC 18°	120	75400X120
75117	SBC 18° LA	111	75400X111
75115	SBC 2-2 18° 1pc. stand	130	75400X130
75120	SBC 2-2 Head & Block	131	75400X131
75122	Pontiac/SBC 15°	123	75400X123
75126	Pontiac/SBC 23° 867 60/40	121	75400X121
75127	Pontiac/SBC 23° 867 60/40	121	75400X121
75163	Pontiac BB 326/455	160	75400X160

TFS

75154	-5 18° SBC	110	75400X110
75111	23° SBC	114	75400X114

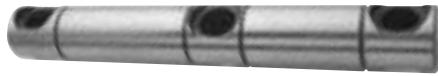
Pro Action

75116	Iron Lightening	114	75400X114
75123	23° Iron RR	110	75400X110
75153	23° Iron RR LA	111	75400X111
75138	14°	116	75400X116

World Products

75111	SR Torquer	114	75400X114
75112	Sportsman II	114	75400X114

aluminum aluminum aluminum aluminum



SHAFT REPLACEMENTS

Part No.	Description
----------	-------------

75501X001	Chevrolet SB Cylinders 1, 5, 8, 4
75501X002	Chevrolet SB Cylinders 3, 7, 6, 2
75501X003	Chevrolet SB SB2 1.6 bolt centers
75501X004	Pontiac
75501X005	Ford 351N
75501X006	Ford 302 & Windsor
75501X007	Ford Victor 351
75501X020	Chevrolet BB, Ford 460, Olds & Big Duke Exh.
75501X021	Olds 14" & Big Duke .600 intake offset
75501X022	Olds 14" & Big Duke 1.3 intake offset
75501X003	Ford 351 Yates 1.6 bolt centers



TORX HEAD SHAFT BOLTS

Shaft bolt fastens rocker shaft to the mounting base stand.
(5/16-24 X 1 1/4 12 Pt)
#75524 1 Only



SNAP RINGS

Snap ring for Aluminum shaft rocker assemblies. 9/16 shaft.
1 Only.
#75529



STAND-TO-CYLINDER HEAD SHIMS

Mounting base stand shimming is often required to achieve optimum rocker arm-to-valve geometry. Available in three thicknesses. Specify head when ordering.

Part No.	Description
74527X025	.025 Thick 1 only
74527X050	.050 Thick 1 only
74527X100	.100 Thick 1 only
74530X045	Inv. Stand. Rk. 1 only

STAND BOLTS

Fasteners for securing mounting base stands to cylinder head. Specify length: 3/4", 1", 1 3/4".

Part No.	Dia.	Length
74525X001	7/16"	3/4"
74525X002	7/16"	1"
74525X004	7/16"	1 1/4"
74525X005	3/8"	3/4"
74525X005	3/8"	1"

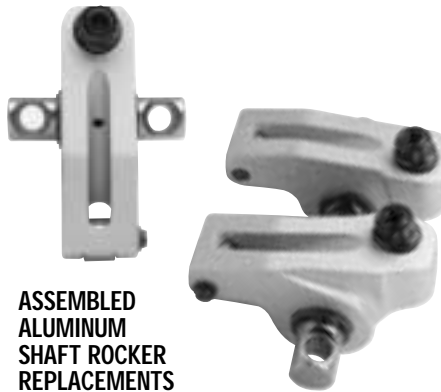


ALUMINUM SHAFT ROCKER REPLACEMENT BODIES

Our replacement bodies are built to the same exacting tolerances as our shaft assemblies for true bolt-on accuracy and repeatability. They include the adjusting components, tip assembly and bearings. They are fully assembled, ready for mounting. Specify engine, head, which cylinder, intake or exhaust, ratio and offset when ordering.



#75510 Aluminum Shaft Rocker Body 1 only



ASSEMBLED ALUMINUM SHAFT ROCKER REPLACEMENTS

Our assembled replacement bodies are fully complete, ready for mounting. They include the adjusting components, tip assembly, bearings, shaft and shaft spacers. Specify which cylinder, ratio and offset when ordering.

#75503	Shaft Rocker - 1 Assembled Pair for 1 pc. stand
#75505	Shaft Rocker - 1 Assembled Rocker for individual stand

SHAFT SPACERS FOR ALUMINUM SHAFT ROCKERS

Hi-temp 6/6 nylon

#75526X000	9/16 x 3/4 x Custom
#75526X030	9/16 x 3/4 x .030 thick
#75526X050	9/16 x 3/4 x .050 thick
#75526X060	9/16 x 3/4 x .060 thick
#75526X085	9/16 x 3/4 x .085 thick
#75526X100	9/16 x 3/4 x .100 thick
#75526X105	9/16 x 3/4 x .105 thick
#75526X290	9/16 x 3/4 x .290 thick
#75526X395	9/16 x 3/4 x .395 thick



AXLE PIN & WHEEL ASSEMBLIES

This replacement kit contains one each of the following:
Axle pin, tip wheel & Rotor Clip.
#75520 1set

Individual parts:
#75520C Rotor Clip, 1 only
#75520P Axle pin, 1 only
#75520T Tip wheel, 1 only



LASH ADJUSTMENT COMPONENTS

#75522	Lash adjuster screw, 1 only
#75523	Lash adjuster jam nut, 1 only
#75523W	Jam nut washer, 1 only

NEEDLE BEARINGS

#75528X001	9/16" dia. x 3/8"
#75528X002	9/16" dia. x 1/2"
#75528X003	9/16" dia. x 3/4"

accessories

TORX DRIVE SOCKET
Fits our shaft bolts.
3/8" drive
#74306



SHAFT HEIGHT GAUGE KIT

Clever tool makes quick work of setting optimum stand/shaft height.

#75300X001	fits 5/16" valve
#75300X002	fits 11/32" valve
#75300X003	fits 3/8" valve

ADJUSTABLE PUSHROD GAUGE

Allows you to quickly determine the precise pushrod length requirement. A must tool for achieving optimum valve train geometry.

Part No.	Description
70480	5.500" to 6.500"
70481	6.500" to 7.500"
70482	7.500" to 8.500"
70483	8.500" to 9.500"
70485	includes one of each length

E-Z WRENCH

A must have for quick rocker adjustment.
7/16 12 point wrench with 1/8 hex
#74305



MOUNTING KIT

Kit for individual mounting base stand shaft rocker systems.
#74308 Includes:

- 1-jig
- 1-3/16" drill
- 1-Drill stop
- 1-Hold down bolt
- 32 #74530 shims
- 32 #74531 dowel pins

TESTING/CHECKING SPRING

Set Of 2
#87601SPR



SPRING COMPRESSOR ADAPTER SHAFT

#75304